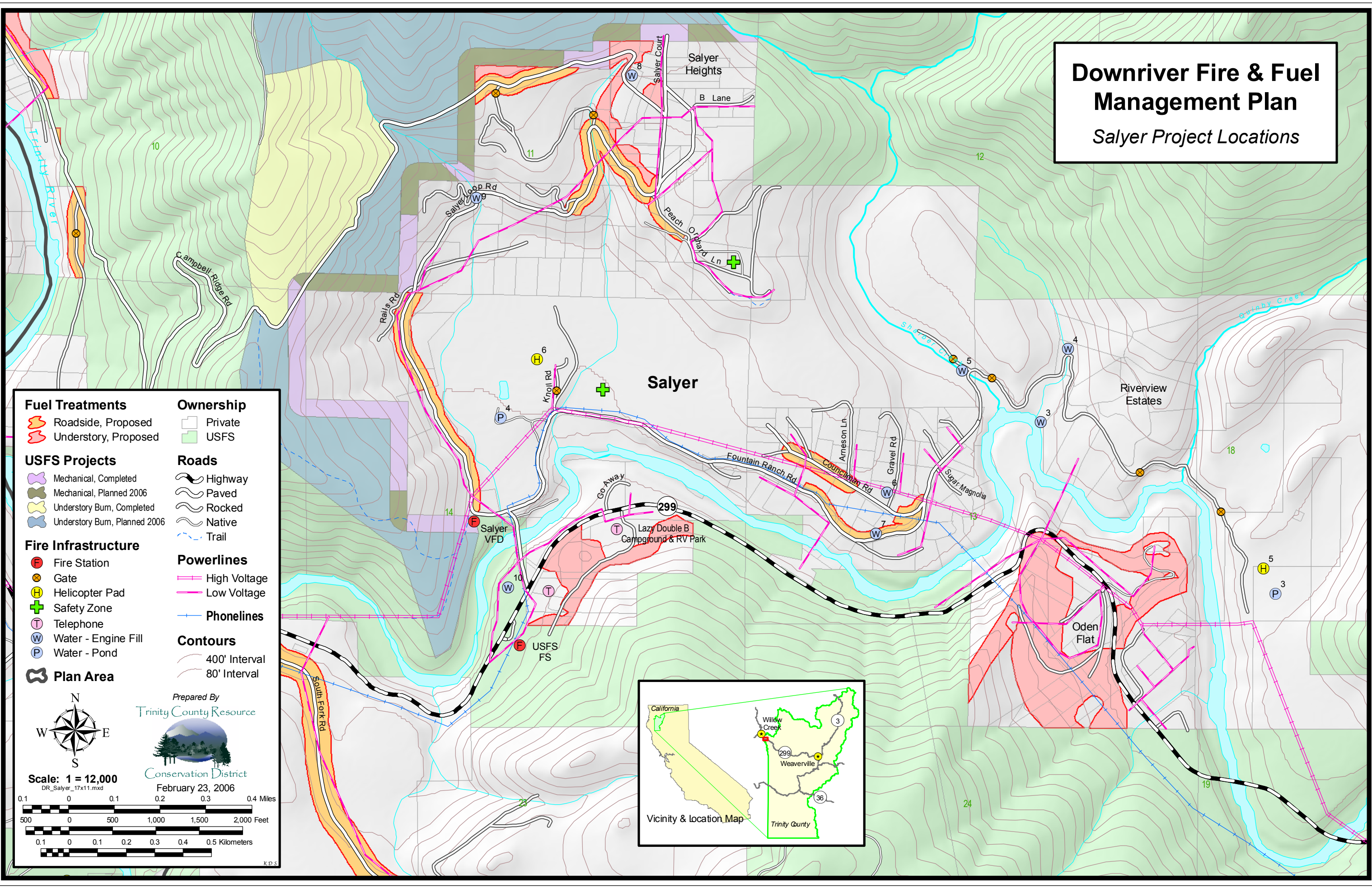


Downriver Fire & Fuel Management Plan

Salyer Project Locations



- | | |
|-------------------------------|-------------------|
| Fuel Treatments | Ownership |
| Roadside, Proposed | Private |
| Understory, Proposed | USFS |
| USFS Projects | Roads |
| Mechanical, Completed | Highway |
| Mechanical, Planned 2006 | Paved |
| Understory Burn, Completed | Rocked |
| Understory Burn, Planned 2006 | Native |
| Fire Infrastructure | Trail |
| Fire Station | Powerlines |
| Helicopter Pad | High Voltage |
| Safety Zone | Low Voltage |
| Telephone | Phonelines |
| Water - Engine Fill | Phonelines |
| Water - Pond | Contours |
| Plan Area | 400' Interval |
| | 80' Interval |

Prepared By
Trinity County Resource
Conservation District
February 23, 2006

Scale: 1 = 12,000
DR_Salyer_17x11.mxd

0.1 0 0.1 0.2 0.3 0.4 Miles
500 0 500 1,000 1,500 2,000 Feet
0.1 0 0.1 0.2 0.3 0.4 0.5 Kilometers

